



DRONE SERVICES



Providing a range of cutting-edge aerial solutions for a variety of applications

DRONE CAPABILITY STATEMENT



Broadbent's team of licensed and insured commercial drone pilots provide stunning aerial photography and videography, detailed mapping and surveying, and efficient inspections of hard-to-reach areas. With our state-of-the-art equipment and experienced FAA-licensed Remote Pilots, we can help you achieve your goals cost-effectively with precision and at the highest industry standards.

CORE COMPETENCIES

We apply our drone competencies to:

- 3D modeling
- Geospatial data processing
- High-resolution aerial video
- High-resolution orthophoto mapping
- Thermal imagery analysis
- Topographic mapping
- Vegetative analysis
- Volumetric measurement

SPECIALTIES

Aerial Mapping

Aerial mapping at abandoned mine lands to identify physical and environmental hazards and document reclamation.

Construction Documentation

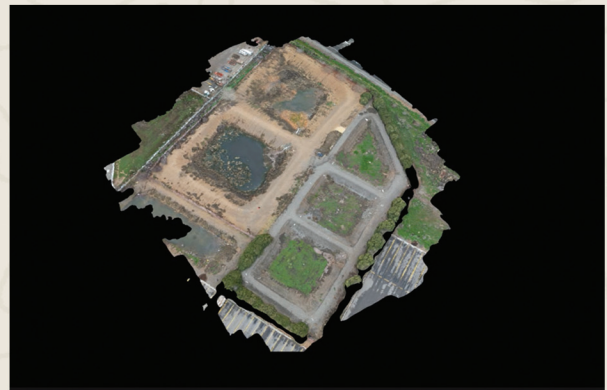
Volumetric measurements, construction staking, and orthophoto mapping for project sites across the Western U.S. and Pacific Islands.

Emergency Response

Providing access to real-time solutions through aerial imagery and video, atmospheric monitoring, and thermal imagery analysis.

Standard Operating Procedures (SOPs)

Development of drone SOPs used for aerial imagery and data collection at federal projects.



CONTACT INFORMATION

Neil Ellis, Drone Services Manager
FAA sUAS Pilot#: 4662026
Phone: 510.333.7274
Email: nellis@broadbentinc.com

